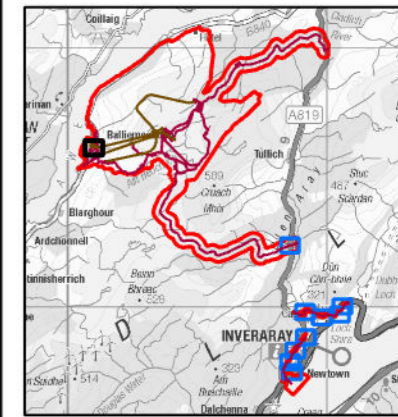


PROJECT
BALLIEMANOCH
PUMPED STORAGE
HYDRO

CLIENT
 ILI (Borders PSH) Ltd.

CONSULTANT
 AECOM Limited
 177 Bothwell Street
 Glasgow, B2 7ER
 T +44(0)141 202 0500
 www.aecom.com

- LEGEND**
- Development Boundary
 - Above Ground Infrastructure
 - Below Ground Infrastructure
 - Survey areas (2021, 2023)
 - Survey area (2019 - Allt a' Chrosaid only)
 - Zone of construction and of possible construction disturbance (30 m)
- Bat roost suitability (BRS)**
- ★ High BRS (confirmed roost)
 - ★ Low BRS (confirmed roost)
 - ▲ High BRS
 - ▲ Moderate BRS
 - ▲ Low BRS



NOTES

Reproduced from Ordnance Survey digital map data © Crown copyright 2023. All rights reserved. Licence number 0100031673.

© 2024 Microsoft Corporation © 2024 Maxar ©CNES (2024) Distribution Airbus DS.

Note that BRS trees and structures are only labelled where they are within the 30 m zone of construction / construction disturbance, or further away where they were 1. subject to emergence / re-entry survey; or, 2. contain a confirmed bat roost. All trees shown are detailed in the Appendix text, including those shown as unlabelled.

ISSUE PURPOSE

DRAFT

PROJECT NUMBER

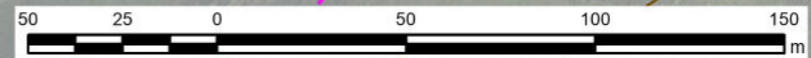
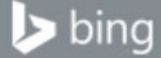
60570241

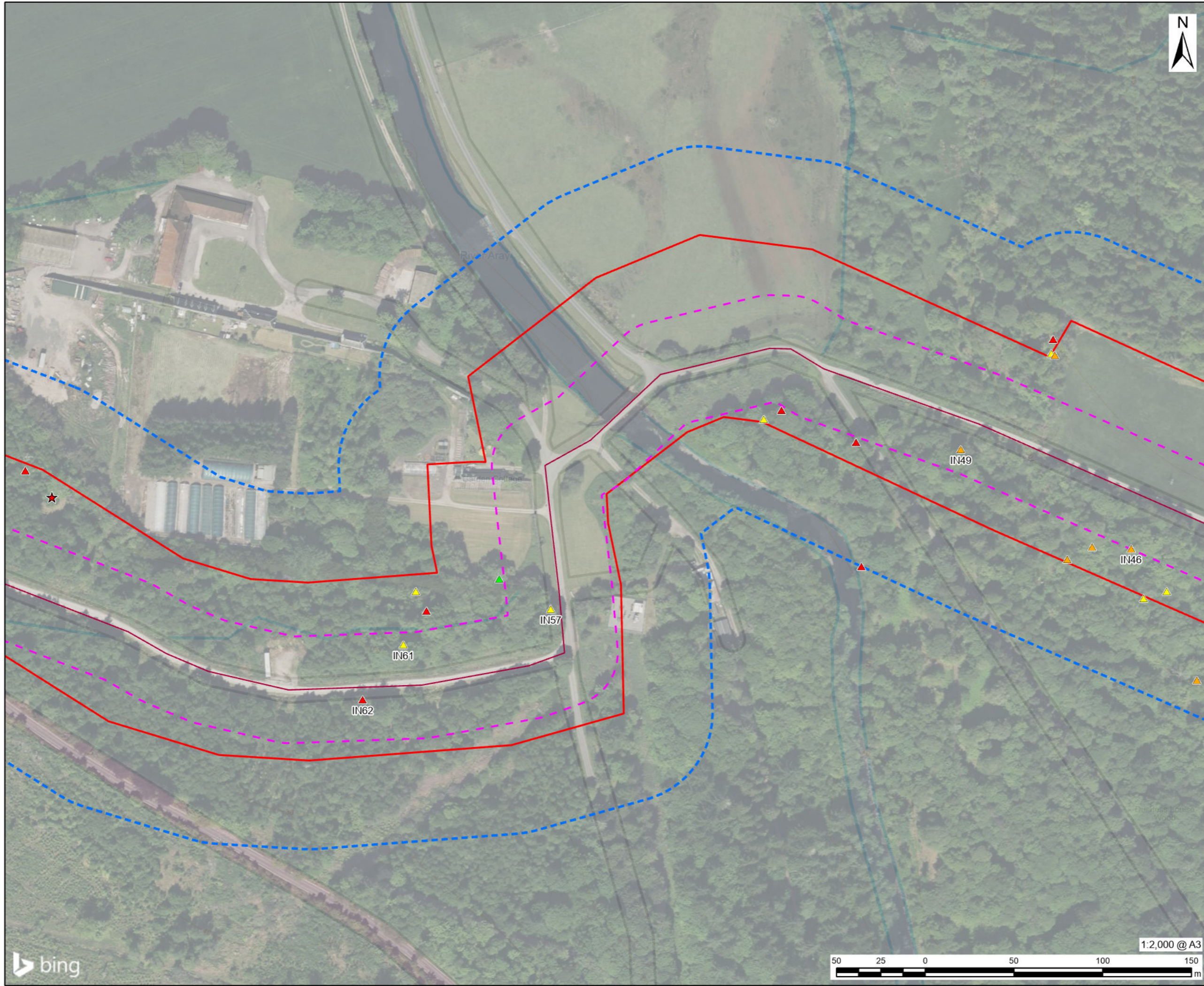
FIGURE TITLE

Bat Roost Suitability Assessment Results

FIGURE NUMBER

Figure 6.12 (Sheet 1 of 10)





AECOM

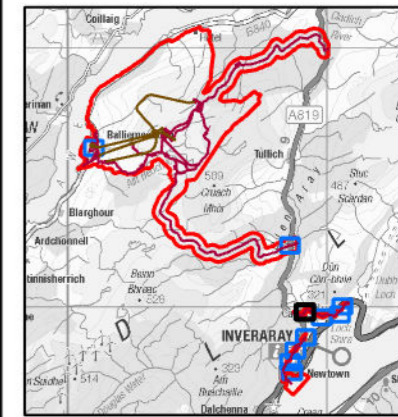
PROJECT
BALLIEMANOCH
PUMPED STORAGE
HYDRO

CLIENT
 ILI (Borders PSH) Ltd.

CONSULTANT
 AECOM Limited
 177 Bothwell Street
 Glasgow, B2 7ER
 T +44(0)141 202 0500
 www.aecom.com

LEGEND

- Development Boundary
- Above Ground Infrastructure
- Survey areas (2021, 2023)
- Zone of construction and of possible construction disturbance (30 m)
- Bat roost suitability (BRS)**
- ▲ High BRS
- ▲ Moderate BRS
- ▲ Low BRS



NOTES

Reproduced from Ordnance Survey digital map data © Crown copyright 2023. All rights reserved. Licence number 0100031673.

© 2024 Microsoft Corporation © 2024 Maxar ©CNES (2024) Distribution Airbus DS.

Note that BRS trees and structures are only labelled where they are within the 30 m zone of construction / construction disturbance, or further away where they were 1. subject to emergence / re-entry survey; or, 2. contain a confirmed bat roost. All trees shown are detailed in the Appendix text, including those shown as unlabelled.

ISSUE PURPOSE

DRAFT

PROJECT NUMBER

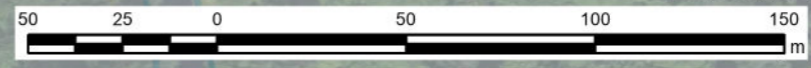
60570241

FIGURE TITLE

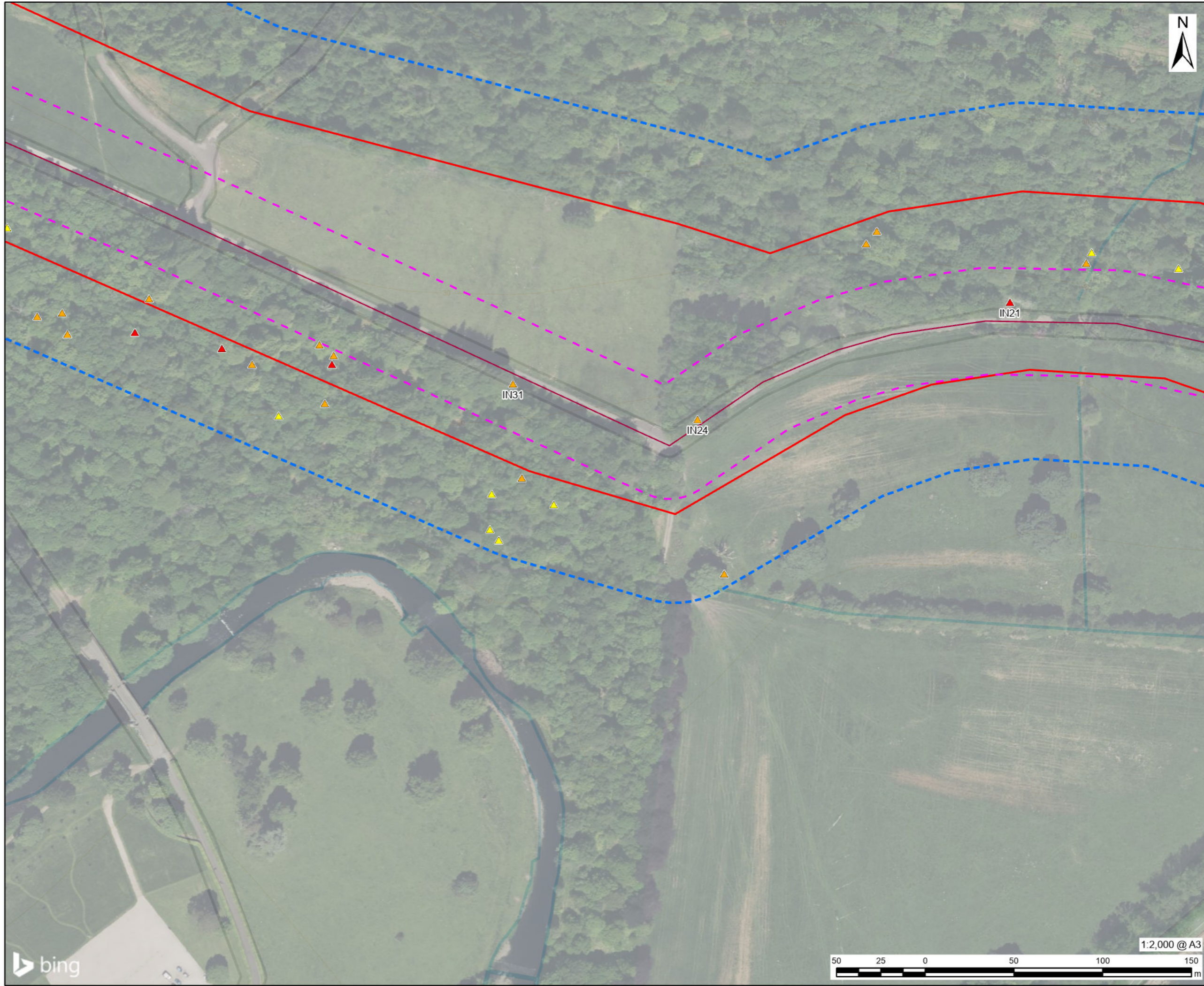
Bat Roost Suitability Assessment Results

FIGURE NUMBER

Figure 6.12 (Sheet 2 of 10)



This drawing has been prepared for the use of AECOM's client. It may not be used, modified, reproduced or relied upon by third parties, except as agreed by AECOM or as required by AECOM or as required by the client. AECOM accepts no responsibility, and denies any liability whatsoever, to any party that uses or relies on this drawing without AECOM's express written consent. Do not scale this document. All measurements must be obtained from the stated dimensions.



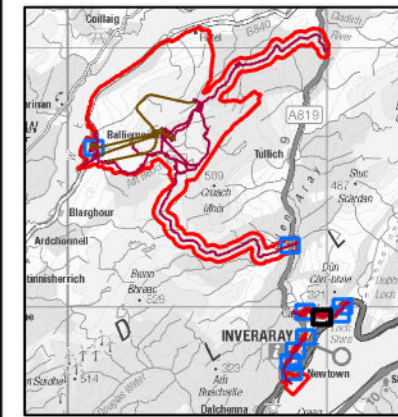
AECOM

PROJECT
BALLIEMEANOCH
PUMPED STORAGE
HYDRO

CLIENT
 ILI (Borders PSH) Ltd.

CONSULTANT
 AECOM Limited
 177 Bothwell Street
 Glasgow, B2 7ER
 T +44(0)141 202 0500
 www.aecom.com

- LEGEND**
- Development Boundary
 - Above Ground Infrastructure
 - Survey areas (2021, 2023)
 - Zone of construction and of possible construction disturbance (30 m)
 - Bat roost suitability (BRS)**
 - ▲ High BRS
 - ▲ Moderate BRS



NOTES
 Reproduced from Ordnance Survey digital map data © Crown copyright 2023. All rights reserved. Licence number 0100031673..

© 2024 Microsoft Corporation © 2024 Maxar ©CNES (2024) Distribution Airbus DS.

Note that BRS trees and structures are only labelled where they are within the 30 m zone of construction / construction disturbance, or further away where they were 1. subject to emergence / re-entry survey; or, 2. contain a confirmed bat roost. All trees shown are detailed in the Appendix text, including those shown as unlabelled.

ISSUE PURPOSE

DRAFT

PROJECT NUMBER

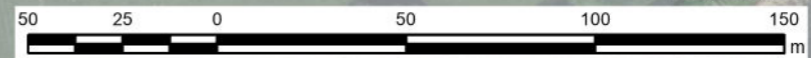
60570241

FIGURE TITLE

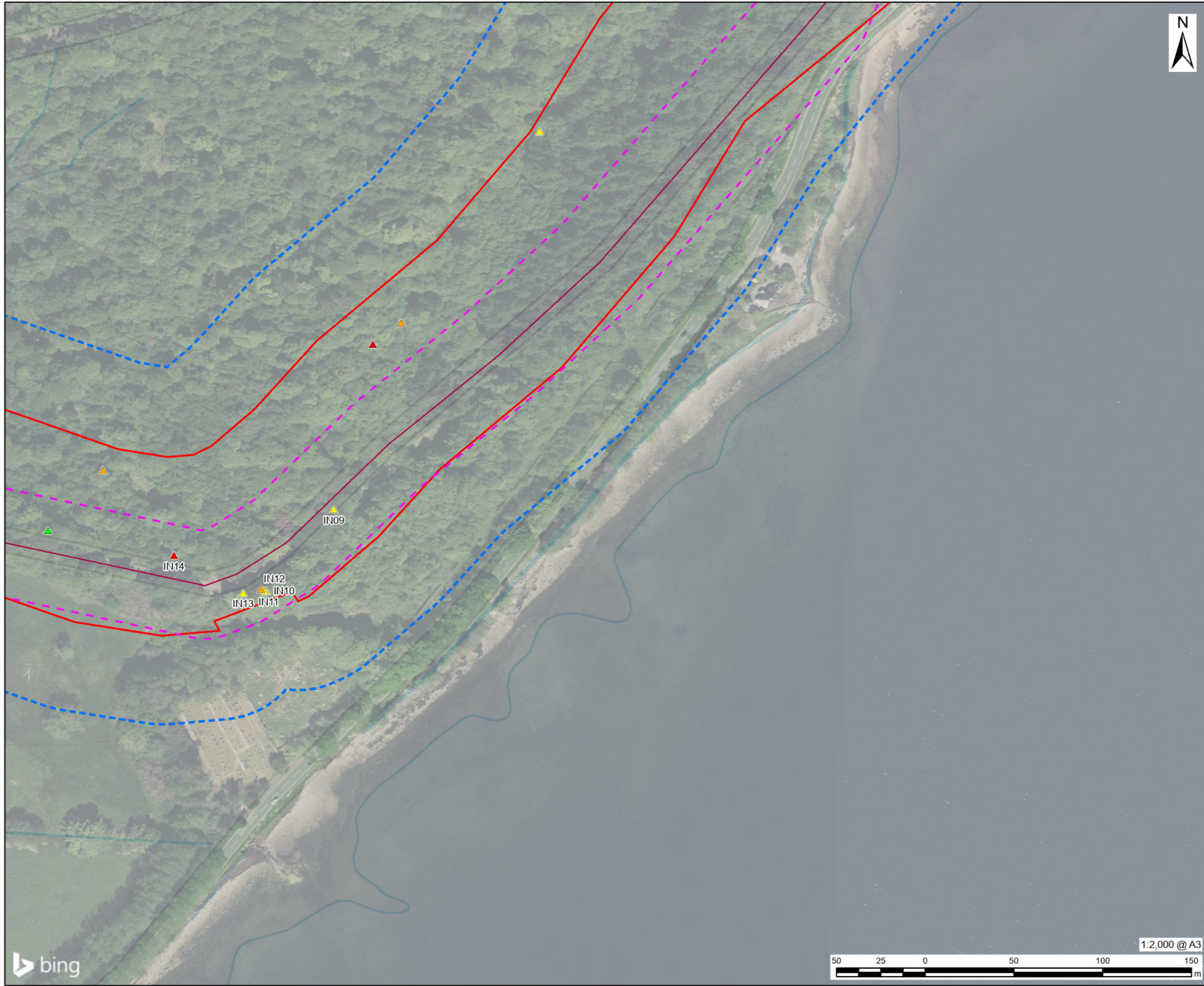
Bat Roost Suitability Assessment Results

FIGURE NUMBER

Figure 6.12 (Sheet 3 of 10)



This drawing has been prepared for the use of AECOM's client. It may not be used, modified, reproduced or relied upon by third parties, except as agreed by AECOM or as required by law. AECOM accepts no responsibility, and denies any liability whatsoever, to any party that uses or relies on this drawing without AECOM's express written consent. Do not scale this document. All measurements must be obtained from the stated dimensions.



AECOM

PROJECT

**BALLIEMEANOCH
PUMPED STORAGE
HYDRO**

CLIENT

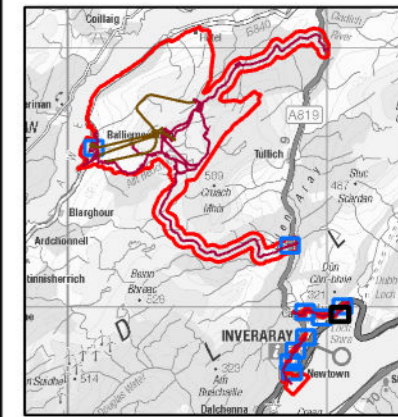
ILI (Borders PSH) Ltd.

CONSULTANT

AECOM Limited
177 Bothwell Street
Glasgow, B2 7ER
T +44(0)141 202 0500
www.aecom.com

LEGEND

- Development Boundary
- Above Ground Infrastructure
- Survey areas (2021, 2023)
- Zone of construction and of possible construction disturbance (30 m)
- Bat roost suitability (BRS)**
- ▲ High BRS
- ▲ Moderate BRS
- ▲ Low BRS



NOTES

Reproduced from Ordnance Survey digital map data © Crown copyright 2023. All rights reserved. Licence number 0100031673.

© 2024 Microsoft Corporation © 2024 Maxar ©CNES (2024) Distribution Airbus DS.

Note that BRS trees and structures are only labelled where they are within the 30 m zone of construction / construction disturbance, or further away where they were 1. subject to emergence / re-entry survey; or, 2. contain a confirmed bat roost. All trees shown are detailed in the Appendix text, including those shown as unlabelled.

ISSUE PURPOSE

DRAFT

PROJECT NUMBER

60570241

FIGURE TITLE

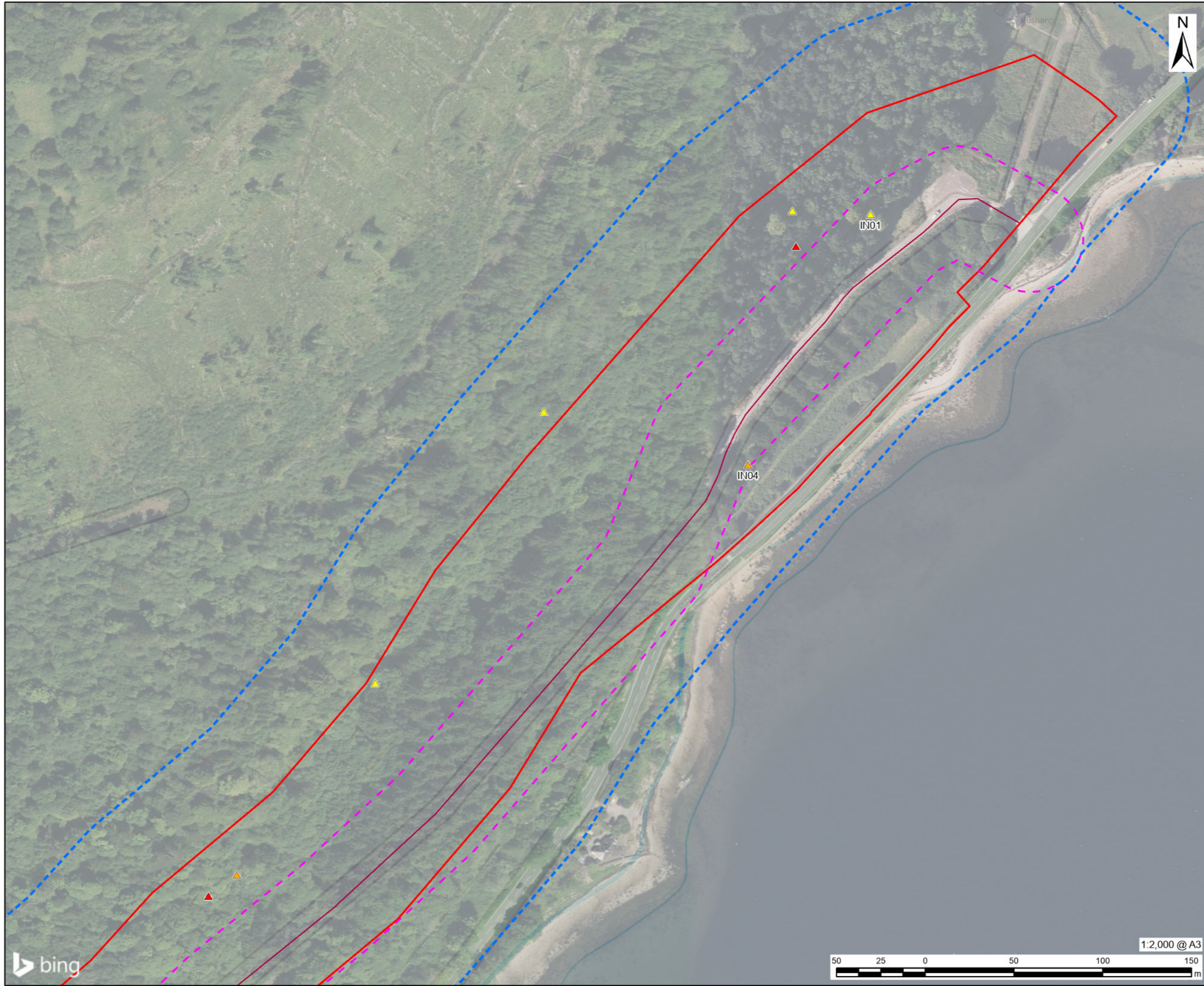
Bat Roost Suitability Assessment Results

FIGURE NUMBER

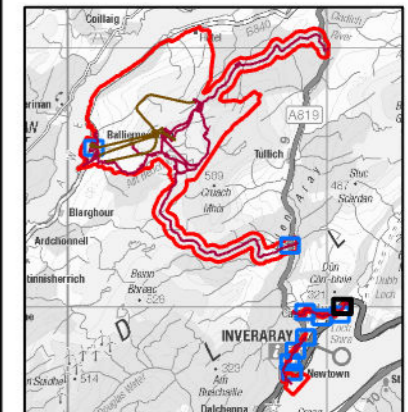
Figure 6.12 (Sheet 4 of 10)



This drawing has been prepared for the use of AECOM's client. It may not be used, modified, reproduced or relied upon by third parties, except as agreed by AECOM or as required by AECOM or as required by AECOM. AECOM accepts no responsibility, and denies any liability whatsoever, to any party that uses or relies on this drawing without AECOM's express written consent. Do not scale this document. All measurements must be obtained from the stated dimensions.



- LEGEND**
- Development Boundary
 - Above Ground Infrastructure
 - Survey areas (2021, 2023)
 - Zone of construction and of possible construction disturbance (30 m)
 - Bat roost suitability (BRS)**
 - ▲ Moderate BRS
 - ▲ Low BRS



NOTES

Reproduced from Ordnance Survey digital map data © Crown copyright 2023. All rights reserved. Licence number 0100031673.

© 2024 Microsoft Corporation © 2024 Maxar ©CNES (2024) Distribution Airbus DS.

Note that BRS trees and structures are only labelled where they are within the 30 m zone of construction / construction disturbance, or further away where they were 1. subject to emergence / re-entry survey; or, 2. contain a confirmed bat roost. All trees shown are detailed in the Appendix text, including those shown as unlabelled.

ISSUE PURPOSE

DRAFT

PROJECT NUMBER

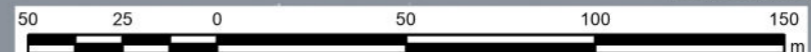
60570241

FIGURE TITLE

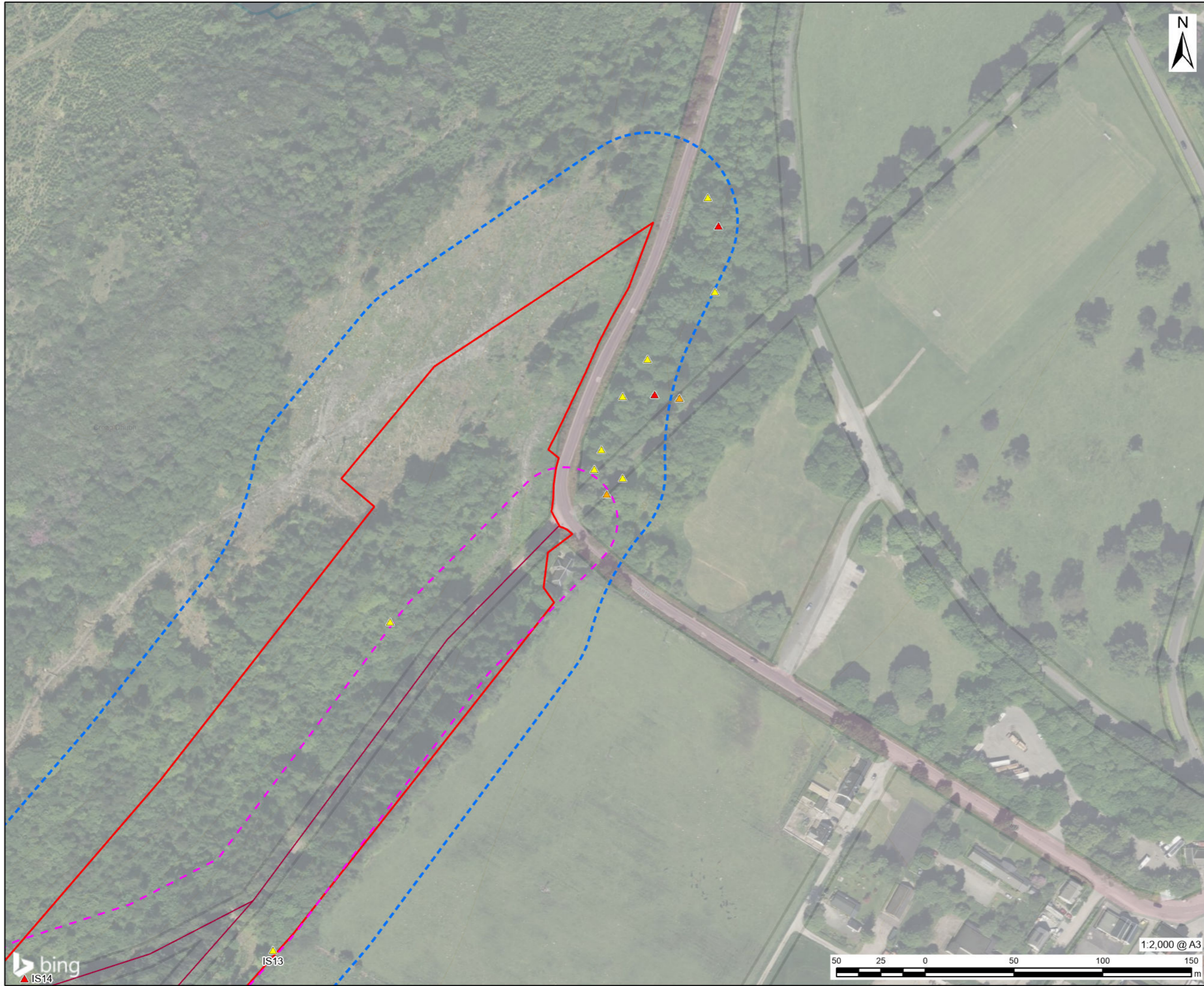
Bat Roost Suitability Assessment Results

FIGURE NUMBER

Figure 6.12 (Sheet 5 of 10)



This drawing has been prepared for the use of AECOM's client. It may not be used, modified, reproduced or relied upon by third parties, except as agreed by AECOM or as required by AECOM's client. AECOM accepts no responsibility, and denies any liability whatsoever, to any party that uses or relies on this drawing without AECOM's express written consent. Do not scale this document. All measurements must be obtained from the stated dimensions.

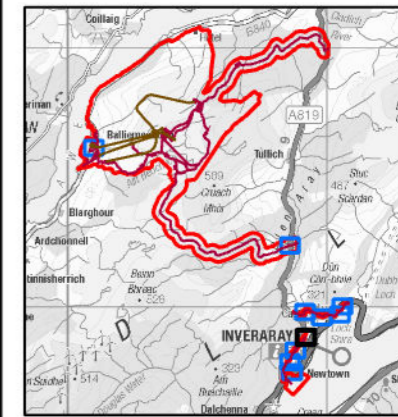


PROJECT
BALLIEMEANOCH
PUMPED STORAGE
HYDRO

CLIENT
 ILI (Borders PSH) Ltd.

CONSULTANT
 AECOM Limited
 177 Bothwell Street
 Glasgow, B2 7ER
 T +44(0)141 202 0500
 www.aecom.com

- LEGEND**
- Development Boundary
 - Above Ground Infrastructure
 - Survey areas (2021, 2023)
 - Zone of construction and of possible construction disturbance (30 m)
 - Bat roost suitability (BRS)**
 - ▲ High BRS
 - ▲ Low BRS



NOTES
 Reproduced from Ordnance Survey digital map data © Crown copyright 2023. All rights reserved. Licence number 0100031673..

© 2024 Microsoft Corporation © 2024 Maxar ©CNES (2024) Distribution Airbus DS.

Note that BRS trees and structures are only labelled where they are within the 30 m zone of construction / construction disturbance, or further away where they were 1. subject to emergence / re-entry survey; or, 2. contain a confirmed bat roost. All trees shown are detailed in the Appendix text, including those shown as unlabelled.

ISSUE PURPOSE
 DRAFT

PROJECT NUMBER
 60570241

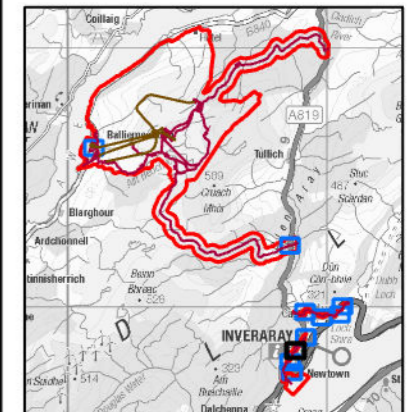
FIGURE TITLE
 Bat Roost Suitability Assessment Results

FIGURE NUMBER
 Figure 6.12 (Sheet 6 of 10)



LEGEND

- Development Boundary
- Above Ground Infrastructure
- Survey areas (2021, 2023)
- Zone of construction and of possible construction disturbance (30 m)
- Bat roost suitability (BRS)**
- ▲ High BRS
- ▲ Moderate BRS
- ▲ Low BRS



NOTES

Reproduced from Ordnance Survey digital map data © Crown copyright 2023. All rights reserved. Licence number 0100031673.

© 2024 Microsoft Corporation © 2024 Maxar ©CNES (2024) Distribution Airbus DS.

Note that BRS trees and structures are only labelled where they are within the 30 m zone of construction / construction disturbance, or further away where they were 1. subject to emergence / re-entry survey; or, 2. contain a confirmed bat roost. All trees shown are detailed in the Appendix text, including those shown as unlabelled.

ISSUE PURPOSE

DRAFT

PROJECT NUMBER

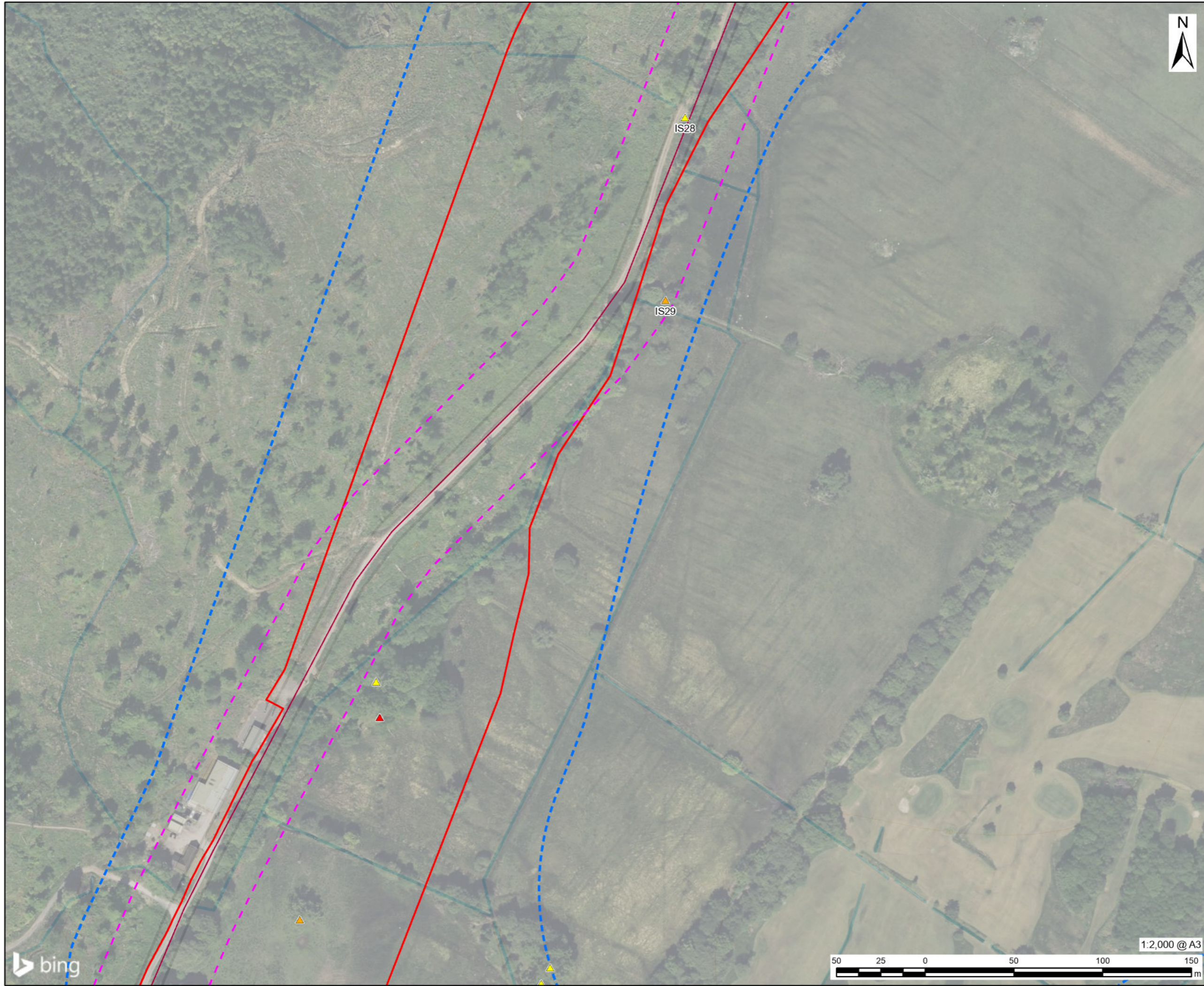
60570241

FIGURE TITLE

Bat Roost Suitability Assessment Results

FIGURE NUMBER

Figure 6.12 (Sheet 7 of 10)



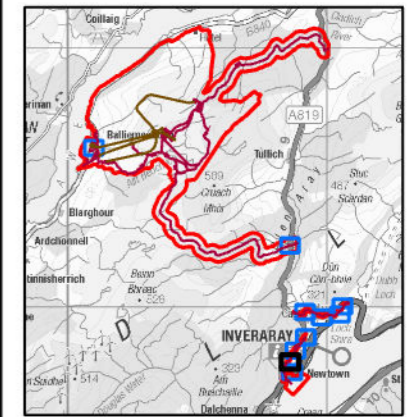
AECOM

PROJECT
BALLIEMEANOCH
PUMPED STORAGE
HYDRO

CLIENT
 ILI (Borders PSH) Ltd.

CONSULTANT
 AECOM Limited
 177 Bothwell Street
 Glasgow, B2 7ER
 T +44(0)141 202 0500
 www.aecom.com

- LEGEND**
- Development Boundary
 - Above Ground Infrastructure
 - Survey areas (2021, 2023)
 - Zone of construction and of possible construction disturbance (30 m)
 - Bat roost suitability (BRS)**
 - ▲ Moderate BRS
 - ▲ Low BRS



NOTES
 Reproduced from Ordnance Survey digital map data © Crown copyright 2023. All rights reserved. Licence number 0100031673.

© 2024 Microsoft Corporation © 2024 Maxar ©CNES (2024) Distribution Airbus DS.

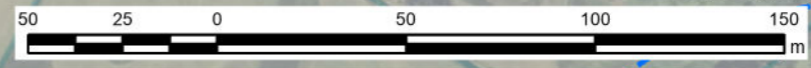
Note that BRS trees and structures are only labelled where they are within the 30 m zone of construction / construction disturbance, or further away where they were 1. subject to emergence / re-entry survey; or, 2. contain a confirmed bat roost. All trees shown are detailed in the Appendix text, including those shown as unlabelled.

ISSUE PURPOSE
 DRAFT

PROJECT NUMBER
 60570241

FIGURE TITLE
 Bat Roost Suitability Assessment Results

FIGURE NUMBER
 Figure 6.12 (Sheet 8 of 10)



This drawing has been prepared for the use of AECOM's client. It may not be used, modified, reproduced or relied upon by third parties, except as agreed by AECOM or as required by law. AECOM accepts no responsibility, and denies any liability whatsoever, to any party that uses or relies on this drawing without AECOM's express written consent. Do not scale this document. All measurements must be obtained from the stated dimensions.



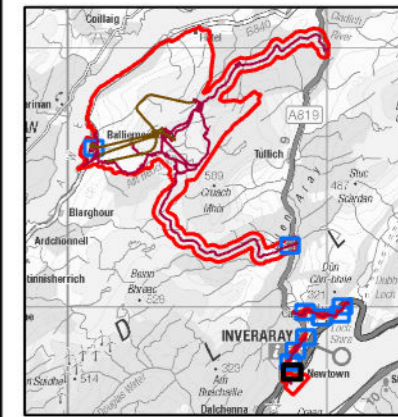
AECOM

PROJECT
BALLIEMEANOCH
PUMPED STORAGE
HYDRO

CLIENT
 ILI (Borders PSH) Ltd.

CONSULTANT
 AECOM Limited
 177 Bothwell Street
 Glasgow, B2 7ER
 T +44(0)141 202 0500
 www.aecom.com

- LEGEND**
- Development Boundary
 - Above Ground Infrastructure
 - Survey areas (2021, 2023)
 - Zone of construction and of possible construction disturbance (30 m)



NOTES
 Reproduced from Ordnance Survey digital map data © Crown copyright 2023. All rights reserved. Licence number 0100031673..

© 2024 Microsoft Corporation © 2024 Maxar ©CNES (2024) Distribution Airbus DS.

Note that BRS trees and structures are only labelled where they are within the 30 m zone of construction / construction disturbance, or further away where they were 1. subject to emergence / re-entry survey; or, 2. contain a confirmed bat roost. All trees shown are detailed in the Appendix text, including those shown as unlabelled.

ISSUE PURPOSE

DRAFT

PROJECT NUMBER

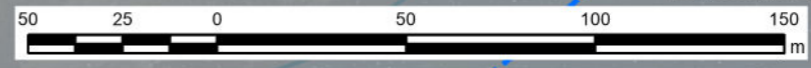
60570241

FIGURE TITLE

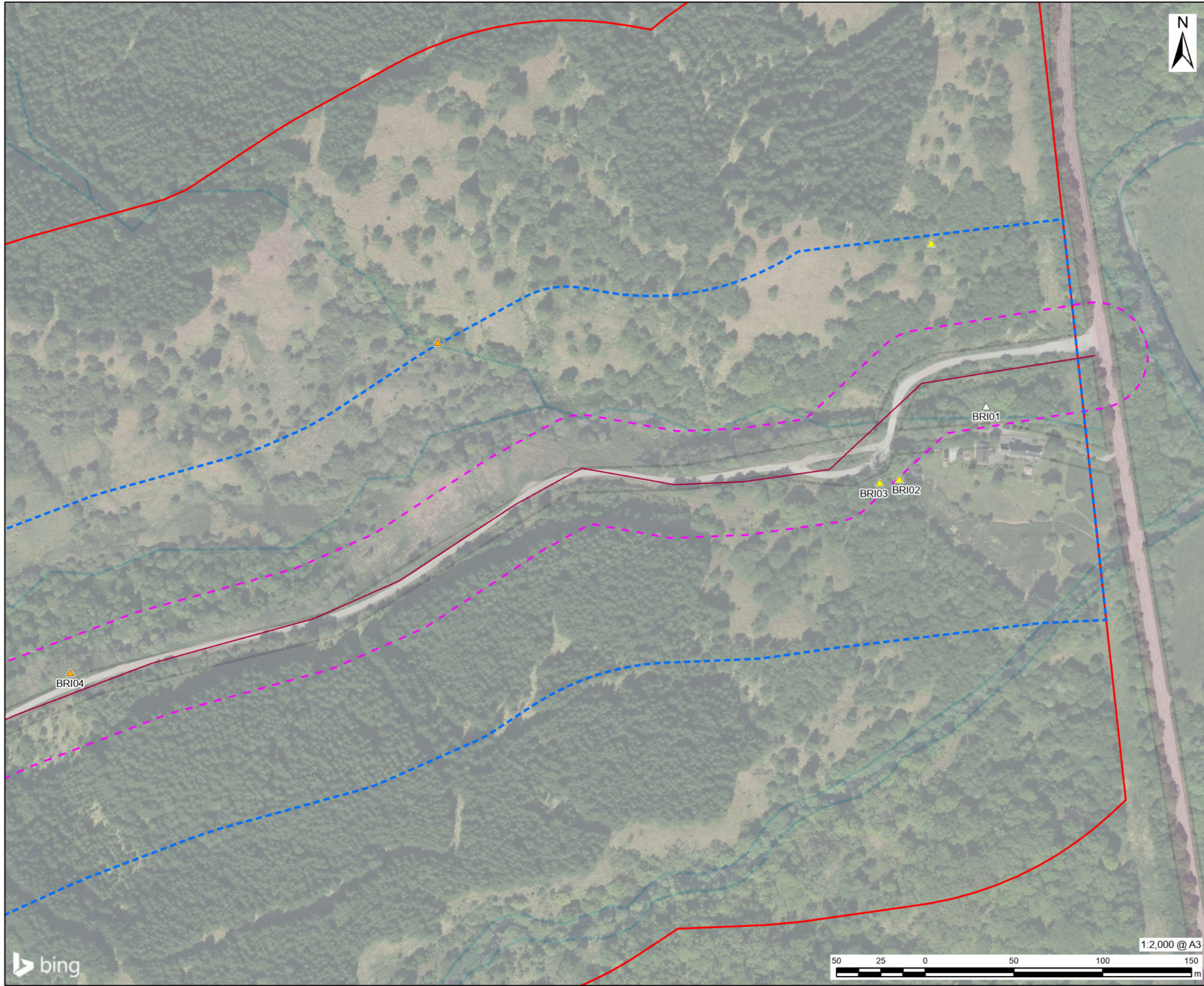
Bat Roost Suitability Assessment Results

FIGURE NUMBER

Figure 6.12 (Sheet 9 of 10)

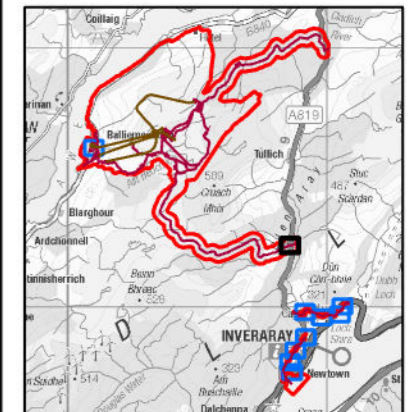


This drawing has been prepared for the use of AECOM's client. It may not be used, modified, reproduced or relied upon by third parties, except as agreed by AECOM or as required by law. AECOM accepts no responsibility, and denies any liability whatsoever, to any party that uses or relies on this drawing without AECOM's express written consent. Do not scale this document. All measurements must be obtained from the stated dimensions.



LEGEND

- Development Boundary
- Above Ground Infrastructure
- Survey areas (2021, 2023)
- Zone of construction and of possible construction disturbance (30 m)
- Bat roost suitability (BRS)**
- ▲ Moderate BRS
- ▲ Low BRS
- △ No access



NOTES

Reproduced from Ordnance Survey digital map data © Crown copyright 2023. All rights reserved. Licence number 0100031673.

© 2024 Microsoft Corporation © 2024 Maxar ©CNES (2024) Distribution Airbus DS.

Note that BRS trees and structures are only labelled where they are within the 30 m zone of construction / construction disturbance, or further away where they were 1. subject to emergence / re-entry survey; or, 2. contain a confirmed bat roost. All trees shown are detailed in the Appendix text, including those shown as unlabelled.

ISSUE PURPOSE

DRAFT

PROJECT NUMBER

60570241

FIGURE TITLE

Bat Roost Suitability Assessment Results

FIGURE NUMBER

Figure 6.12 (Sheet 10 of 10)

This drawing has been prepared for the use of AECOM's client. It may not be used, modified, reproduced or relied upon by third parties, except as agreed by AECOM or as required by law. AECOM accepts no responsibility, and denies any liability whatsoever, to any party that uses or relies on this drawing without AECOM's express written consent. Do not scale this document. All measurements must be obtained from the stated dimensions.